

Eldon Terrace

WINDMILL HILL

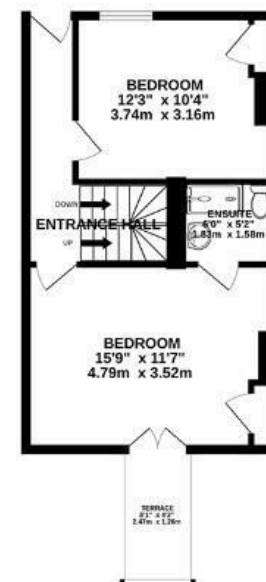
APPROXIMATE FLOOR AREA
145 SQM / 1561 SQFT



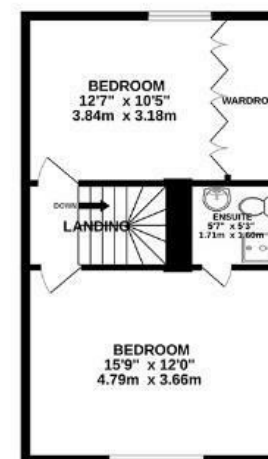
LOWER GROUND FLOOR



GROUND FLOOR



FIRST FLOOR



Boardwalk

Eldon Terrace

, BRISTOL



£635,000



BS3 4NZ



4 Bedrooms



3 Bathrooms

"Living in Windmill Hill has been an absolute joy for us. Our favourite spot by far after living in a variety of other Bristol areas, it feels like a truly special part of the city where greenery and exceptional views mix with a really lovely community feel. We love that we can be in the buzz of the city in 10 minutes, watch the always-evolving development of East Street into one of Bristol's new booming areas, "roll" down the hill in minutes to jump on the local train to anywhere in the city and coast, or simply cocoon in our garden in what feels like a green oasis! It's an area that flexes to our needs; gastronomy, nightlife and family amenities like Windmill Hill City Farm mix in a great way that allows us to straddle our old identity as an always-socialising couple to a more peaceful one as a family!"

